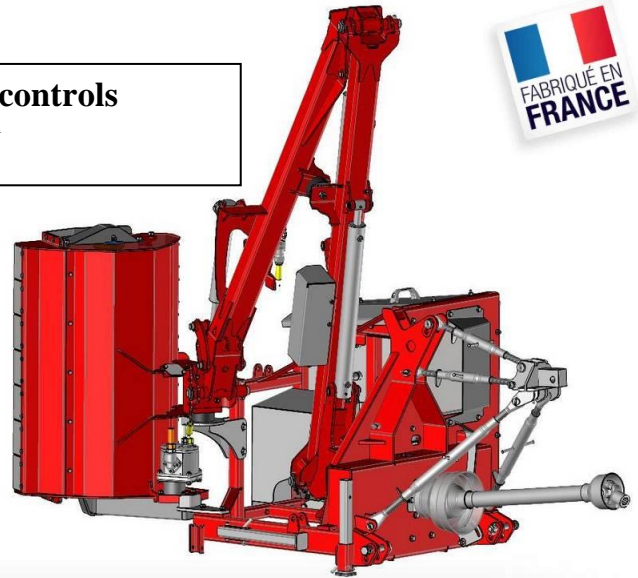


RBEP45TB100 Pro Arm brushcutter with electric controls


Specially designed for medium power tractors from 50 to 90 hp with PTO = 540 rpm
Minimum tractor weight 2.4T for minimum outer width of tires = 1.60 m



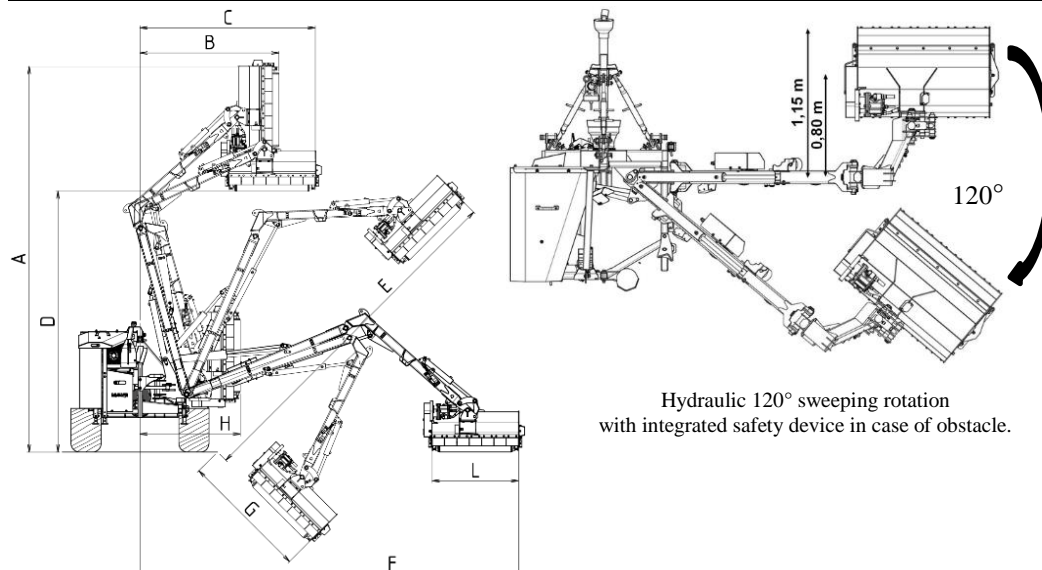
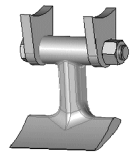
- 3 point rear linkage cat.1 or 2.
- Horizontal reach to tractor axle of 4,40 m.
- Working width of shredding head 100 cm.
- 32 "Y" knives with shackles, width 40, thickness 8, helical arrangement.
- Cutting speed 60 m/s (cutting $\varnothing = 0.382$ m).
- 31 cc GR3 motor with anti-shock and anti-cavitation safety features.
- Rotor power 40 hp, 3000 rpm.
- Bi-directional rotor drive via 2 V-belts.
- Head clearance height 210° with floating position.
- Delivered with cardan shaft ASAE 1 3/8" – 6 splines.
- 110 litre fuel tank, pump group 3: 61cc.
- Heat exchanger and oil-pneumatic lifter as standard.**
- Proportional controls on the 2 arms.
- Weight 720 Kg (820 with hydraulic oil).

The advantages :

- Shredder head :** the 0.80 m forward position in relation to the boom improves work visibility and driving comfort. The location of the articulation pivot allows the head to be perfectly balanced in the floating position, which improves working comfort and reduces stress and wear on the articulations and bearings.
- Electrically driven oil-pneumatic elevation :** by relieving the weight of the shredding head on the ground, it ensures perfect ground contour following and considerably reduces stress and wear on the roller and joints.
- Hydraulic motor with two directions of rotation - high rotor speed :** rotation at 3000 rpm, i.e. a cutting speed of 60 m/s for perfect cutting and shredding. Gradual and timed start-up controlled by electronic board.
- Substantial fuel savings thanks to rotor design with helical arrangement of cutting tools:** uniform and effortless drive, optimal shredding, thick rotor tube: increased rigidity and cutting inertia, electronic balancing after mounting of knives and shackles. Reduced energy consumption and CO2 emissions.
- Curved chassis and rear roller:** the shape of the chassis and the special arrangement of the rear roller optimise ventilation, ejection and self-cleaning of the roller. 3 mm thick high yield strength (HLE) armoured plate.
- Rotor bearings equipped with European quality bearings - Joints :** pivots equipped with "POM" pads and hardened steel shafts.
- Rear roller :** specially designed to resist lateral movements and protect the bearings against rolling and splashing. Adjustable to 3 positions, equipped with removable pads with angular contact bearings and labyrinth seals.
- Reinforced and removable front bumper :** allows to support and absorb the shocks received on the shredder head.
- Sweep / safety cylinder :** 120° sweep equipped with a controlled flap allowing the shredding head to move away in the event of an obstacle.
- Handling box :** electrically controlled in all movements: sweep, arm (proportional), head inclination, floating position with indicator, oil-pneumatic support with indicator and rotor rotation with indicator. Indicator light for abnormal oil temperature.
- Reduced size:** reduced size in road mode width = 1.65 m - height = 2.70 m.
- Safety and ergonomics :** front shield, front and rear rubber fenders to avoid projections. Obstacle clearance cylinder. Accessible grease fittings on all bearings and joints.

References	Working width cm	PTO Speed rpm		Weight Kg	TRACTOR		
					HP	Minimum weight Kg	Minimum outside of wheels
RBEP45TB100	100	540*	16 x 2	820	60/90	2,4 T	1,60 m

Options : hammers

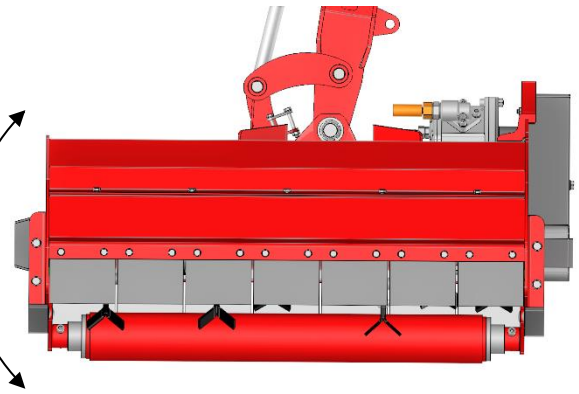


	RBEP45L100
A (m)	4.5
B (m)	1.6
C (m)	2.1
D (m)	3.0
E (m)	4.0
F (m)	4.4
G (m)	2.0
H (m)	1.2
L (m)	1

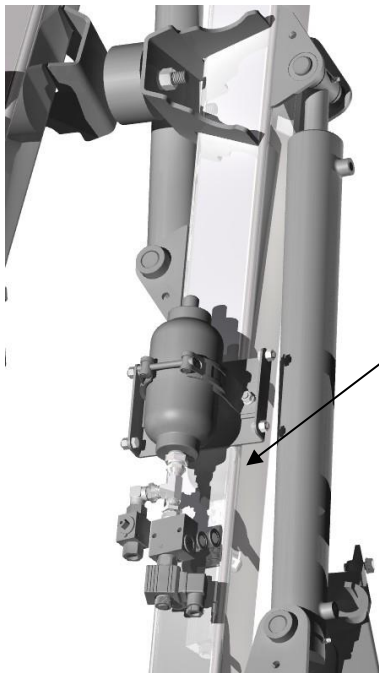
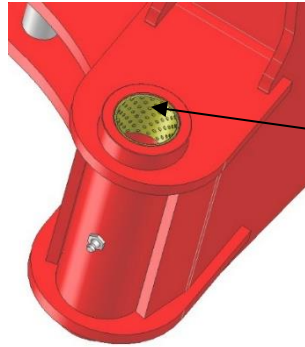


Electric joystick for all controls.

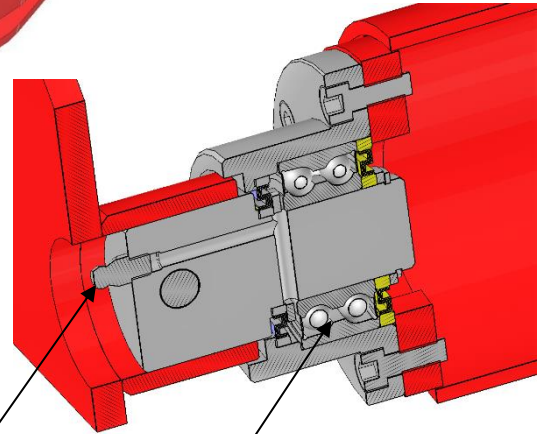
Shredder head, 210° angle of rotation, with floating position



Joints :
Pivots equipped with "POM" bearings and treated shafts.



Oleo-pneumatic elevation



Rear roller :
Double row angular contact impellers, labyrinth seals, removable shafts and bushings.

Greasing

Scrapers mounted on the rotor to prevent grass from rolling away

Helical rotor equipped with "Y" knives and shackles

Shielded chassis plate

Hydraulic motor with double direction of rotation

Indirect rotor drive by means of 2 V-belts

Rubber flap

Protective shield

Belt tension

